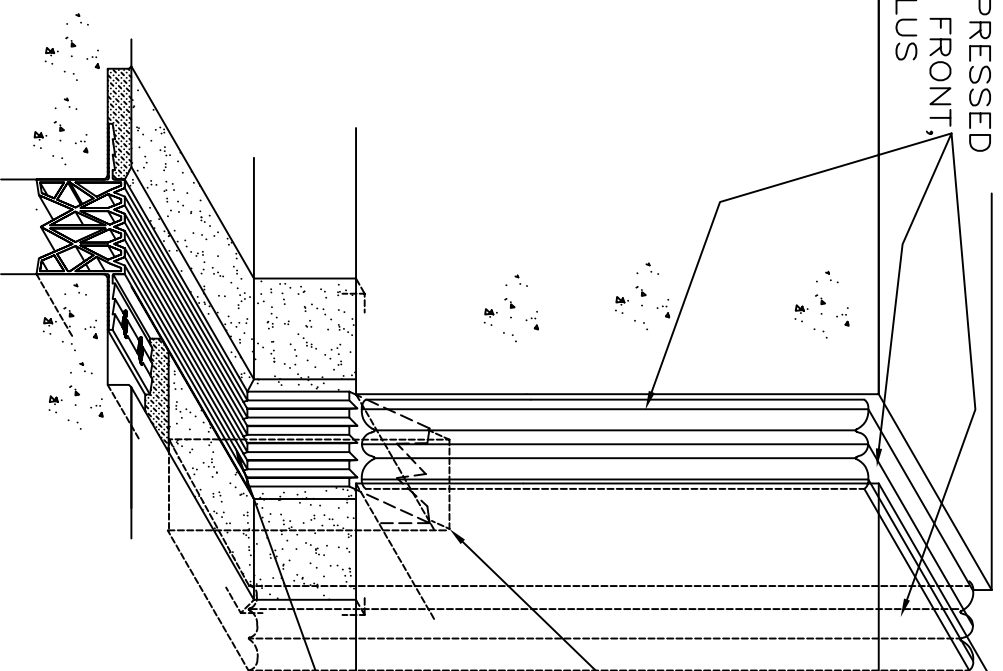


SEISMIC COLORSEAL-DS PRECOMPRESSED
 FOAM SEALANT FACTORY-COATED FRONT,
 TOP, AND BACK WITH LOW-MODULUS
 SILICONE BELLOWS
 (CUSTOM DEPTH TO SUIT FIELD
 CONDITIONS)



SEISMIC COLORSEAL-DS
 NOTCHED IN FIELD TO SHINGLE
 OVER TCR-FACTORY-MITERED
 UPTURN

THERMAFLEX TCR 400
 MULTI-BARRIER HEAT WELDABLE
 SANTOPRENE GLAND

EMSEAL JOINT SYSTEMS LTD.

SEISMIC COLORSEAL-DS TO THERMAFLEX TCR TRANSITION

THIS DOCUMENT CONTAINS INFORMATION OF A CONFIDENTIAL NATURE
 UNAVAILABLE TO THE PUBLIC AND IS PROPRIETARY TO EMSEAL
 CORPORATION. ANY UNAUTHORIZED USE, WILL BE PROSECUTED.
 REPRODUCTION IN ANY FORM BEING THE EXCLUSIVE RIGHT OF EMSEAL
 CORPORATION. ANY UNAUTHORIZED REPRODUCTION WHETHER IN
 TWO OR THREE DIMENSIONS WILL BE PROSECUTED.

DRAWN	DATE:	SCALE:	DRAWING
BY: LH	06-21-07	N.T.S.	No: 1 OF 1
PART NUMBER:			