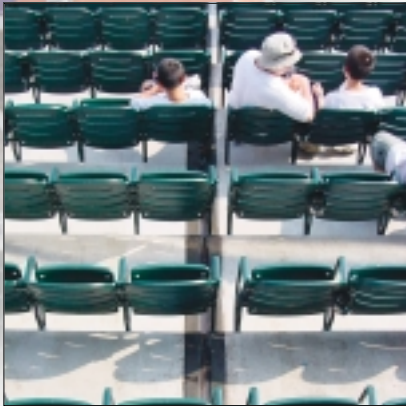


**Over 25 Years
Quality Products & Service**

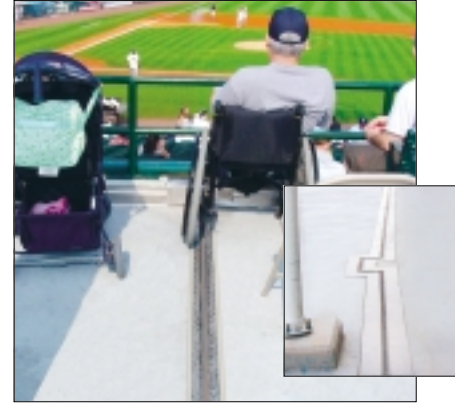
www.emseal.com



**Structural Expansion Joints
in Treads and Risers**



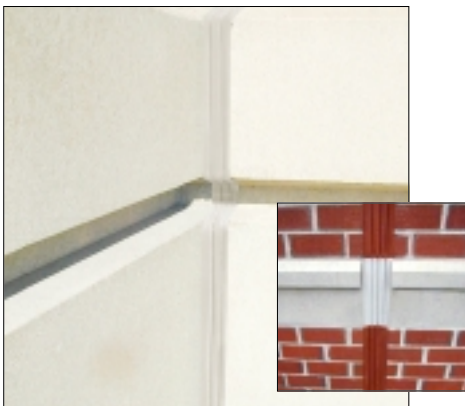
**Control Joints or Welded Tee
Joints in Treads and Risers**



**Concourse Joints
Split or Solid Slab**



The Proven Solution in Sport Facility Expansion Joints



**Vertical Walls & Ceilings
Suites / Vending / Bathrooms**



**Interior Joints
Boxes / Suites**



**Vertical Plane
Structural Separations:
Parapet & Transitions**



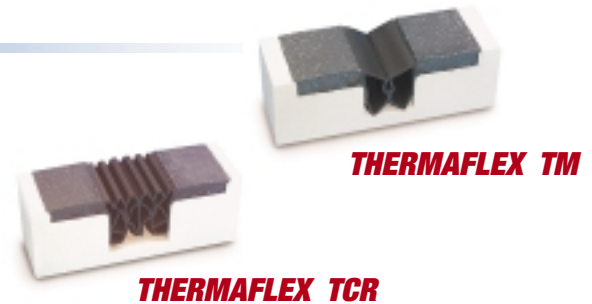
The Proven Solution

A Complete Line of Sports Facility Expansion Joint Products

The Solution for

Structural Expansion Joints in Treads and Risers of Seating Bowl

THERMAFLEX TM and **THERMAFLEX TCR** series offers factory-welded transitions and terminations. Nosing material aggregate/resin ratio not to exceed 2:1 by weight.



The Solution for

Control Joints or Welded Tee Joints in Treads and Risers of Seating Bowl

DSM is a joint-faced-adhered, precompressed, hydrophobic-acrylic-impregnated foam that is watertight with 75% movement (+50% and -25%) and incorporates a factory-coated highway-grade tensionless, silicone bellows.



The Solution for

Vertical Plane Structural Separations: Parapets and Transitions to Exterior Walls, Bowl Joints, and Stair and Elevator Towers

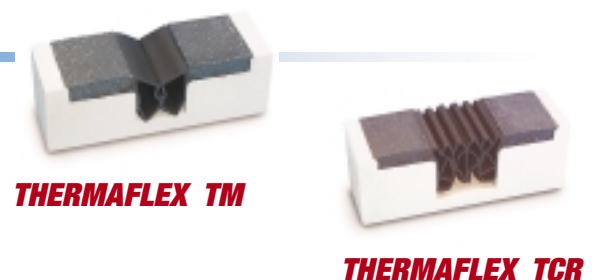
COLORSEAL is a precompressed, acrylic impregnated expanding watertight foam sealant that is factory pre-coated with DOW 790 Silicone, with noninvasive anchoring. It is available in 12 colors.



The Solution for

Concourse Joints Over Occupied Space – Solid Slab

THERMAFLEX TM and **THERMAFLEX TCR** series offers factory-welded transitions and terminations. Nosing material aggregate/resin ratio not to exceed 2:1 by weight.



The Solution for

Concourse Joints Over Occupied Space – Split Slab

MIGUTAN FP Series is installed on the structural slab. Its side flashing sheets are integrated with the deck waterproofing system to form a continuous, completely watertight system. Sealing insert and side sheets are held in place by stainless steel protector caps. Constructed with factory-welded transitions and terminations, it is installed as part and under the same contract as the deck waterproofing membrane.



MIGUTAN

The Solution for

Vertical Walls and Ceilings at Boxes and Suites, Vending and Bathrooms

COLORSEAL is a precompressed, acrylic impregnated expanding watertight foam sealant that is factory pre-coated with DOW 790 Silicone, with noninvasive anchoring. It is available in 12 colors.



COLORSEAL

The Solution for

Interior Joints

FS Series is an interlocking system of heavy-duty aluminum extrusions capable of accepting 3-dimensional movement and high point loads.



FS SERIES

The Solution for

Below Grade Walls and Ice Floors

20H System is a high-density precompressed, impregnated watertight expanding foam seal.



20H System

The Solution for

Seismic and Large-Gap Structural Expansion Joints in Treads and Risers of Seating Bowl and Concourse Joints

SJS is made up of silicone-and-impregnated foam hybrid components that are constructed from 2 horizontal joints pre-assembled in parallel adjacent to a heavy-duty extruded aluminum spline. The spline acts as a receptor for attaching the surface-mounted traffic bearing plates. SJS is watertight and does not require a gutter system typically used by other systems for large-gap conditions. **SJS/FP** is designed for concourse joints over occupied space in a split slab. It is installed on the structural slab and incorporates side flashing sheets that are integrated with the deck waterproofing system to form a continuous, completely watertight system. Factory fabricated transitions and terminations are available for both systems.



SJS



SJS/FP

Does your sports facility have a need for watertight expansion joints?

EMSEAL can fill your needs.

Application	Principle	Product
Structural Expansion Joint in Treads and Risers	Factory fabricated transitions and terminations Nosing aggregate/resin ratio not to exceed 2:1 by weight	THERMAFLEX TM OR TCR SJS* (For seismic or wide-gap)
Control Joints or Weld Tee Joints in Treads and Risers and Ice Floors	Precompressed, impregnated, expanding watertight foam - joint face adhered 75% Movement Factory coated w/ highway-grade silicone	DSM SYSTEM
Concourse Joints over Occupied Space - Split Slab	Installed on the structural slab Integrated side flashing sheet combined with deck waterproofing membrane Stainless steel protector caps Factory fabricated transitions and terminations	MIGUTAN SJS/FP* (For seismic or wide-gap)
Concourse Joints over Occupied Space - Solid Slab	Factory fabricated transitions and terminations Nosing aggregate/resin ratio not to exceed 2:1 by weight	THERMAFLEX TM OR TCR SJS* (For seismic or wide-gap)
Vertical Plane Structural Separations <ul style="list-style-type: none"> ■ Parapets ■ Transitions to exterior wall ■ Transitions to bowl joints ■ Stair or elevator towers 	Precompressed, acrylic-impregnated expanding watertight foam sealant Factory pre-coated with DOW 790 Silicone Non-invasive anchoring	COLORSEAL
Interior walls and ceilings <ul style="list-style-type: none"> ■ Boxes or Suites ■ Booths ■ Vending ■ Bathrooms 	Precompressed, acrylic-impregnated expanding watertight foam sealant Factory pre-coated with DOW 790 Silicone Non-invasive anchoring	COLORSEAL
Interior Floors	Interlocking system of heavy-duty aluminum extrusions capable of accepting 3-dimensional movement and high point loads. Factory welded transitions.	FS SERIES
Below Grade Joints and Ice Floors	High-density, precompressed, impregnated, watertight expanding foam seal. Non-invasive anchoring.	20 H SYSTEM
*Seismic and Large Gap – Solid Slab	Factory fabricated transitions and terminations Silicone-and-impregnated foam hybrid components Integrated metal cover plate 100% Movement	SJS
*Seismic and Large Gap– Split Slab	Installed on the structural slab Side flashing sheets that integrate with deck-waterproofing membranes	SJS/FP
All Transitions	Joints between similar and dissimilar materials	WARRANTED by EMSEAL

For more information about EMSEAL watertight systems please contact our technical department at 800-526-8365 or visit us at www.emseal.com

